



## The lungs, airspaces, and interstitium

Lung nodules and masses—detecting lung cancer

---

---

---

---

---

### What will I gain from this video?

After watching this video, you will be able to confidently identify and describe lung nodules and lung masses.

---

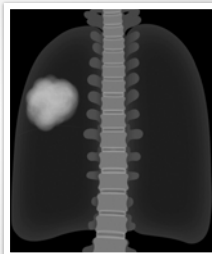
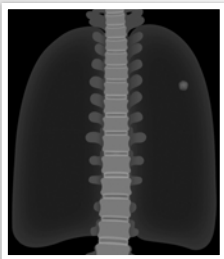
---

---

---

---

### Nodule/mass



---

---

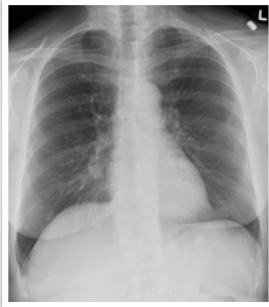
---

---

---

**Benign vs. malignant**

Size



---

---

---

---

---

---

**Benign vs. malignant**

Size



---

---

---

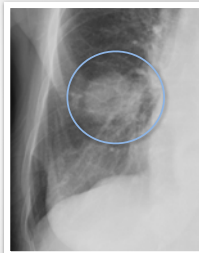
---

---

---

**Benign vs. malignant**

Interval growth



---

---

---

---

---

---

**Benign vs. malignant**

Shape (margin)



---

---

---

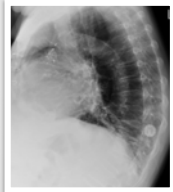
---

---

---

**Benign vs. malignant**

Calcification



---

---

---

---

---

---

**Benign vs. malignant**

Additional



---

---

---

---

---

---

## Benign vs. malignant

Other



---

---

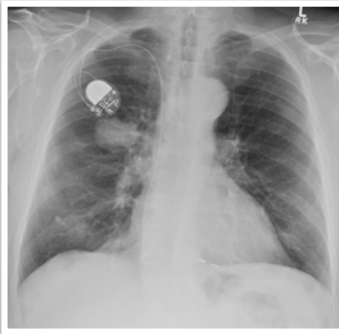
---

---

---

---

## Examples



---

---

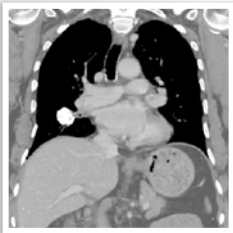
---

---

---

---

## Examples



---

---

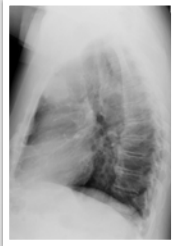
---

---

---

---

Examples



---

---

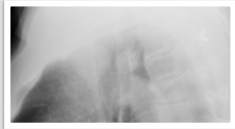
---

---

---

---

Examples



---

---

---

---

---

---

Examples



---

---

---

---

---

---

## Examples



Distinguishing benign from malignant  
Need previous!!!

Distinguishing benign from malignant  
Need previous!!!

### **Suspect malignancy if:**

- Interval growth
- Ill-defined margins
- Lack of calcification
- Rib destruction

Distinguishing benign from malignant

Need previous!!!

**Suspect malignancy if:**

- Interval growth
- Ill-defined margins
- Lack of calcification
- Rib destruction
- Adenopathy
- Pleural disease
- Thick-walled cavity

---

---

---

---

---

---